

## Special Exhibition “Fun with Fans”

From July 14, Saga Arashiyama Museum of Arts & Culture is happy to introduce many artistic fans. Don't miss this perfect exhibition for summer in Arashiyama.

Uchiwa fans were introduced to Japan from China in 6-8 century. It was used as a tool to keep cool and to ward off insects and evil spirits. On the other hand, the Sensu fan was improved in 9-12 century so that it could be folded and carried as a fan we know today. Later they were used as ritual utensils and ornaments for the aristocracy and were also valued as tools used in tea ceremonies and traditional dances. These fans were decorated with beautiful paintings and delighted people's eyes. They often appear in paintings as motifs expressing the dignity and femininity.

Although the demand for fans as tools has decreased, they are still a familiar art form that Japanese people encounter on a daily basis and sometimes play a role as an advertising medium. Many people may also be aware that fans also play a role as colored paper on which professionals write calligraphy.

In this exhibition, with the cooperation of HAKUCHIKUDO, a long-established Kyoto fan maker, various fans made from the modern period to the present day and Japanese paintings depicting fans and



uchiwa fans will be on display. Enjoy the world of fans, which are considered auspicious because of their endless shapes.

The first section of the exhibition begins with a series of Japanese paintings depicting fans. Next, fans created by famous modern painters and fans used as corporate advertisements are displayed. Furthermore, the exhibition introduces the process by which a traditional craft, the Kyoto fan, is made.

Chapter 2 begins with a number of paintings of beautiful women carrying fans, drawn by leading modern painters. This is followed by the first public display of a pair of 12 fans by famous Kyoto painters from the Meiji to Showa periods, painted on fans, a summer tradition.

The third section of the exhibition features fans that were written on by famous calligraphers and painters and served as, so to speak, a kind of signature paper. Enjoy a variety of fans painted by famous early modern painters on their journeys, as well as by celebrities from various fields, such as contemporary illustrator Yoshitaka Amano and leading shogi (Japanese chess) players Sota Fujii and Yoshiharu Habu.





“Sparrows” Takeuchi Seiho



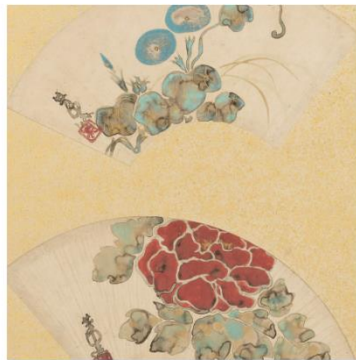
“Early Evening” Isoda Choshu



“Wave of Fans” Tsuchida Bakusen



“Fireworks” Shiokawa Bunrin



“Flowers & Birds in Fan Shape”  
Nakamura Hochu



”Fan Seller” Kobayashi Kokei

“Flowers & Birds in Fan Shape”

”Beauty & Cat”

“12 fans by Famous Kyoto painters”



Nakamura Hochu



Utagawa Hiroshige



Nishimura Goun



## Exhibition Overview

<b>Title</b>	Fun with Fans
<b>Dates</b>	July 14 (Fri.) 2023 to October 9 (Mon.), 2023 1st Period: July 14 (Fri.) to August 28 (Mon.) 2023 2nd Period: August 30 (Wed.) to October 9 (Mon.) 2023
<b>Opening hours</b>	10:00 am – 5:00 pm (last entry 4:30 pm)
<b>Closed</b>	August 31 (Tue.)
<b>Entry fee</b>	General / University student: ¥1000 (¥900) High school student: ¥600 (¥500) Elementary / Junior high school student: ¥400 (¥350) Disabled person and up to one helper: ¥600 (¥500)

\* Prices in parentheses are for groups of 20 or more.

\* Free for preschool children

**Special Cooperation** Hakuchikudo

**Organizers** Saga Arashiyama Museum of Arts & Culture, Kyoto Shimbun