

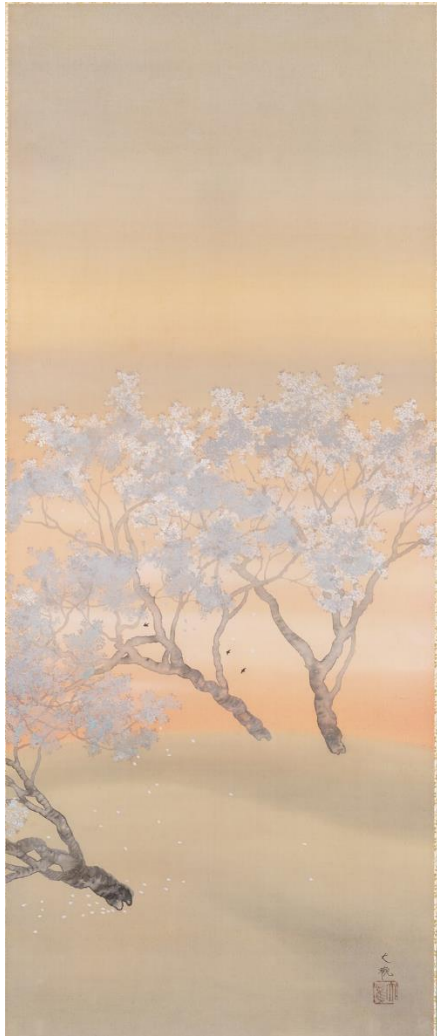
# Seasonal Flowers Painted in Pictures

Flowers beguile the seasons with scent and color. Since painting began, people have used the brush to capture the fleeting beauty of flowers. This exhibition features flowers and fruits painted by Yokoyama Taikan, Hishida Shunsō, and other masters of modern Japanese painting. Even at this moment of year, these pictures allow you to enjoy the passing seasons of Japan.

The theme of Section 1 is Seasonal Flowers and Fruit. Paintings here include Kayama Matazō's signature work *Oboro*, a magical depiction of a weeping cherry at night, Yokoyama Taikan's *Momo*, a vivid rendering of peaches on the tree, and Hayami Gyoshū's *Zansetsu-zu*, which shows narcissus flowering while the snow remains. Moving from scene to scene of this calendar of flowers, you can appreciate the colorful bounty of nature through the passing seasons.

Section 2 is titled 'Painting the Seasons of Japan'. In this single space, you can enjoy an annual round of the beauty of nature as the months progress. In the innovative composition of *Setsugetsuka*, three painters — Takeuchi Seihō, Yokoyama Taikan, and Kawai Gyokudō — collaborated to harmoniously convey the essence of summer, spring, and winter. Meanwhile, in its many finely detailed depictions of plants and animals, a single work by Imao Keinen, *Yobutsu Hyakushu*, represents all the seasons.





Yokoyama Taikan "Spring"



Imao Keinen "Flowers, Birds and Leftovers"

## Exhibition Overview

<b>Title</b>	Seasonal Flowers Painted in Pictures April 23 (Sat.) 2022 to July 3 (Sun.), 2022
<b>Dates</b>	1st Period: April 23 (Sat.) to May 30 (Mon.) 2022 2nd Period: June 1 (Wed.) to July 3 (Sun.) 2022

**Opening hours** 10:00 am – 5:00 pm (last entry 4:30 pm)

**Closed** Tuesdays (open on May 3), May 11, May 13-16

General / University student: ¥900 (¥800)

High school student: ¥500 (¥400)

Elementary / Junior high school student: ¥300 (¥250)

<Combo Tickets with Fukuda Art Museum >

General / University student: ¥2,000

High school student: ¥1,000

**Entry fee** Elementary / Junior high school student: ¥550

Disabled person and up to one helper: ¥1,000

Elementary / Junior high school student: ¥300 (¥250)

Disabled person and up to one helper: ¥500 (¥400)

\* Prices in parentheses are for groups of 20 or more.

\* Free for preschool children

**Organizers** Saga Arashiyama Museum of Arts & Culture, Kyoto Shimbun